

Change of Metal Earth Plate Shape for the FR-E820-5.5K/7.5K series Inverters

Thank you for your continued patronage of Mitsubishi Electric drive control products.
For the FR-E820-5.5K/7.5K series inverters, the shape of the metal earth plate will be changed.

1. Products Affected

FR-E820-5.5K series

FR-E820-7.5K series

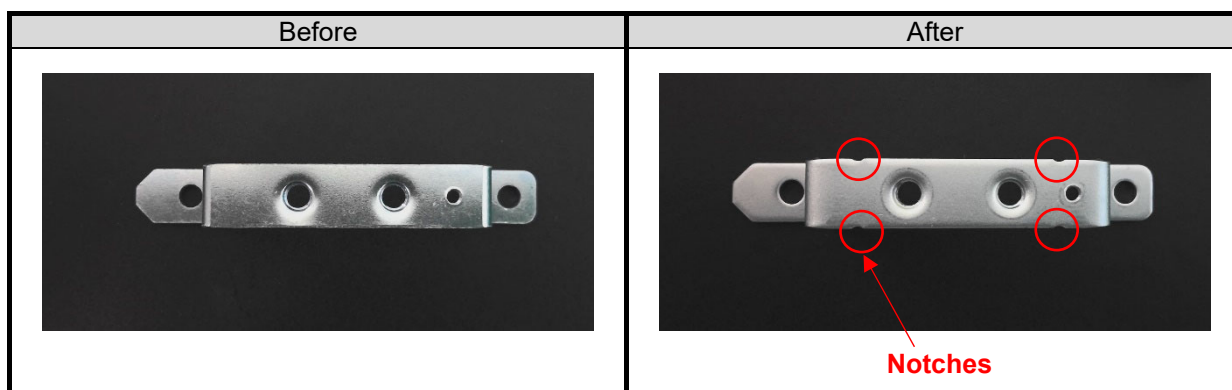
2. Details of Change

The shape of the metal earth plate of the products will be changed as follows.

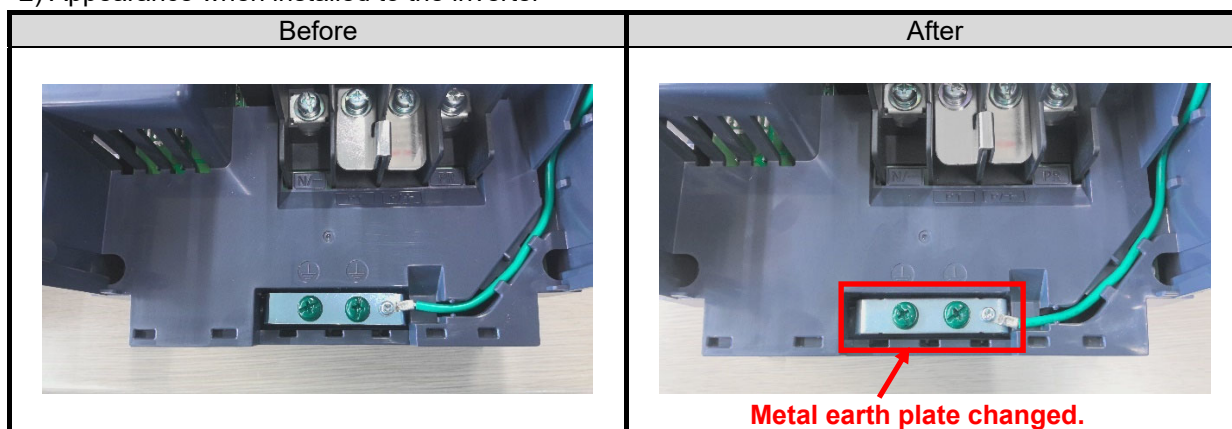
The change does not affect the quality, performance, or specifications of the products.

1) Change of the shape by notching

A progressive die will be used to produce the metal earth plate. Four notches used for positioning will be made on the plate as follows.



2) Appearance when installed to the inverter



| | | | |
|----------------------|---|--|---|
| Date of issue | Published in April 2024 Revised in August 2024 | Title Change of Metal Earth Plate Shape for the FR-E820-5.5K/7.5K series Inverters | Mitsubishi Electric Corp., Nagoya Works 5-1-14 Yada-minami, Higashi-ku, Nagoya 461-8670 Tel.: +81 (52) 721-2111 Main line |
|----------------------|---|--|---|

3. Date of Change

The change will be sequentially applied to products manufactured in May 2024 or later.

※ Only made in Japan will be changed.

4. Product Identification

The SERIAL (determined by date of production) can be checked on the product's rating plate.

SERIAL example on rating plate

□□ 24 5 ○○○○○○
Symbol Year Month Control number

SERIAL

The SERIAL consists of two symbols, three characters indicating the production year and month, and six characters indicating the control number.

The last two digits of the production year are indicated as the Year, and the Month is indicated by 1 to 9, X (October), Y (November), or Z (December).