

### Appearance Change of the FR-BR Series General-Purpose Inverter Option

Thank you for your continued patronage of Mitsubishi Electric drive control products.  
 For the FR-BR resistor unit, the screw for manufacturer's shipment test will be added, and the terminal block mounting position and the mounting hole appearance will be changed.

#### 1. Products Affected

FR-BR-(H)15K, 30K, 55K

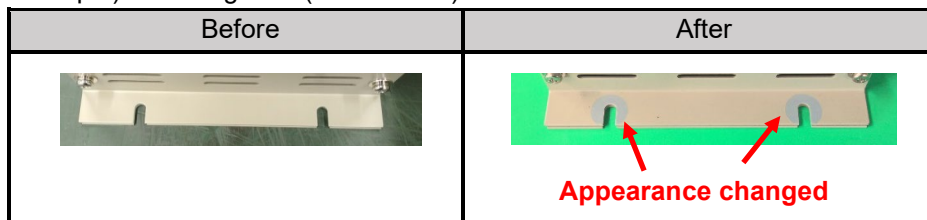
#### 2. Details of Change

The appearance of the terminal block and the mounting holes will be changed.  
 The change does not affect the quality, performance, wiring route, or specifications of the products.

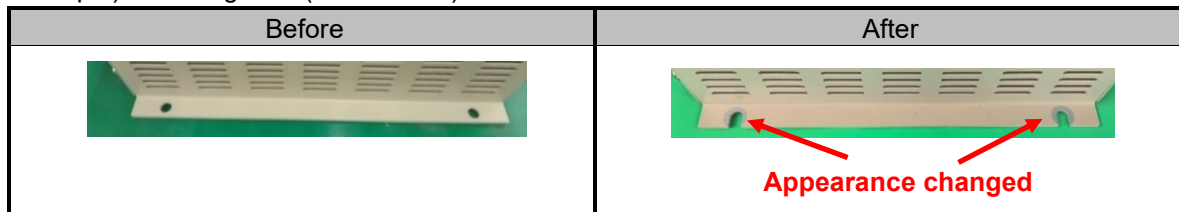
Example) Terminal block (FR-BR-15K)



Example) Mounting hole (FR-BR-15K)

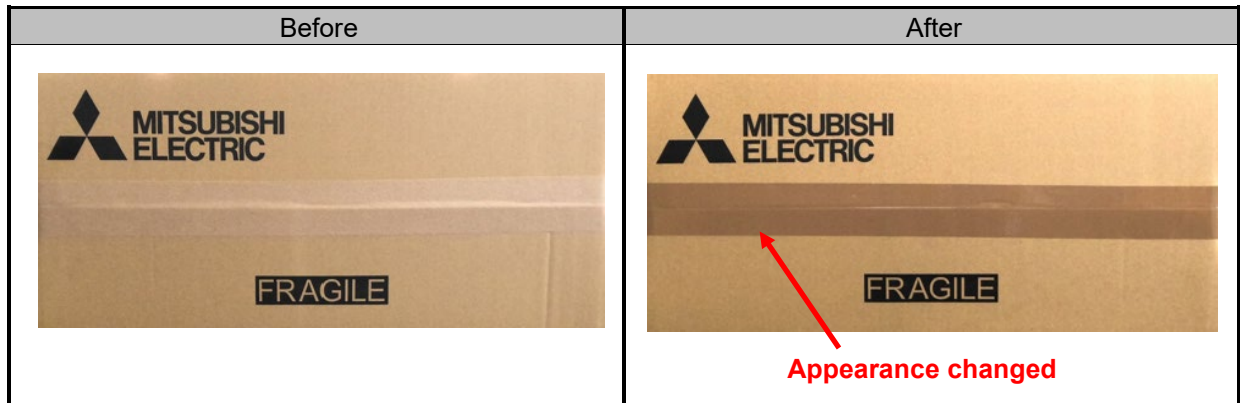


Example) Mounting hole (FR-BR-30K)



<b>Date of issue</b>	September 2024	<b>Title</b>	Appearance Change of the FR-BR Series General-Purpose Inverter Option	Mitsubishi Electric Corp., Nagoya Works 5-1-14 Yada-minami, Higashi-ku, Nagoya 461-8670 Tel.: +81 (52) 721-2111 Main line
----------------------	----------------	--------------	---	---

The appearance of the packaging tape will be changed.



### 3. Date of Change

The change will be sequentially applied to the products in September 2024 or later.

### 4. Product Identification

The products can be identified visually.