

Appearance Change of the Metal Earth Plate for the FR-D700 and FR-F700PJ Series Inverters

Thank you for your continued patronage of Mitsubishi Electric drive control products. The appearance of the metal earth plate for the FR-D700 and FR-F700PJ series inverters will be changed.

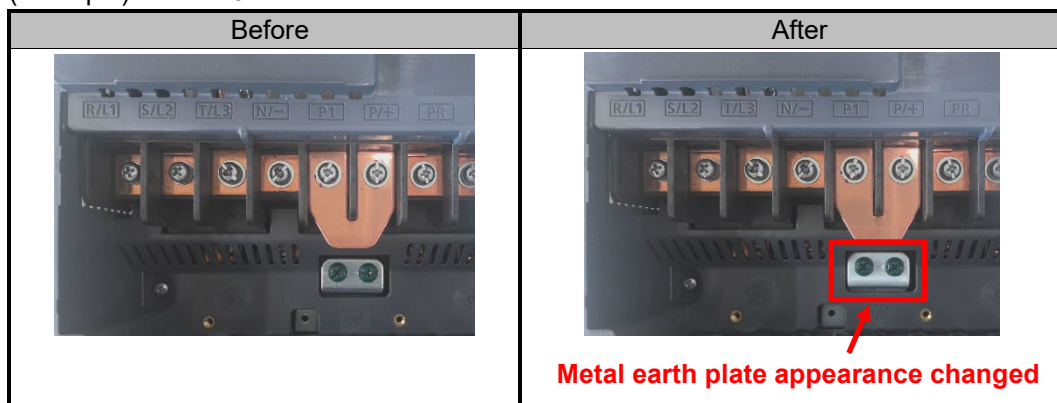
1. Products Affected

- FR-D720-11K/15K series
- FR-F720PJ-11K/15K series

2. Details of Change

The appearance of the metal earth plate of the product will be changed as the plating company will be changed. Compared with conventional metal earth plates, only the gloss of the plating differs. The change does not affect the quality, performance, or specifications of the products.

(Example) FR-D720-11K



3. Date of Change

The change will be sequentially applied to the products in the middle of September 2024 or later.

4. Product Identification

The SERIAL (determined by date of production) can be checked on the rating plate or packaging plate.

SERIAL example on rating plate
 □ 4 9 ○○○○○○
 Symbol Year Month Control number

SERIAL

SERIAL example on packaging plate
 □ 4 9 ○○○
 Symbol Year Month Control number

SERIAL

The SERIAL consists of one symbol, two characters indicating the production year and month, and the control number (six characters for the rating plate, three characters for the packaging plate).

The last digit of the production year is indicated as the Year, and the Month is indicated by 1 to 9, X (October), Y (November), or Z (December).

Date of issue	September 2024	Title	Appearance Change of the Metal Earth Plate for the FR-D700 and FR-F700PJ Series Inverters	Mitsubishi Electric Corp., Nagoya Works 5-1-14 Yada-minami, Higashi-ku, Nagoya 461-8670 Tel.: +81 (52) 721-2111 Main line
----------------------	----------------	--------------	---	---